



**27 Umberville Way, Slough, SL2 2HD**  
**£405,000 Freehold**

CHAIN FREE. A three bedroomed mid terrace property pleasantly located within an established residential setting, walking distance to local amenities and transport links in to London via the Elizabeth Line.

### **Entrance Hall**

Decorative columns, understairs storage, stairs to first floor landing.

### **Sitting Room**

Front aspect glazed window, patio doors opening onto rear garden with covered sitting area

### **Kitchen**

Comprising range of wall and base cupboards and drawers, work surfaces incorporating stainless steel sink, integrated dishwasher, tumble dryer, washing machine and fridge/freezer, double oven and hob inset, stone flooring, glazed door leading to outside covered area

From Entrance Hall stairs to:

### **First Floor landing**

Access hatch to insulated loft

### **Bedroom 1**

Mirrored built in wardrobe, plus a double wardrobe

### **Bedroom 2**

### **Bedroom 3**

Sliding mirrored built in wardrobe

### **Bathroom**

Comprising suite of enclosed bath, shower over, wash hand basin, WC, part tiled walls, tiled floor.

### **Outside**

Enclosed rear garden with an outside covered sitting area, raised pond, storage shed which has a power supply



Floor Plan

Approximate Floor Area = 73.7 sq m / 793 sq ft  
Storage = 5.8 sq m / 62 sq ft  
Covered Area = 13.7 sq m / 147 sq ft  
Total = 93.2 sq m / 1003 sq ft

Umberville Way

Waterman  
Established 1990

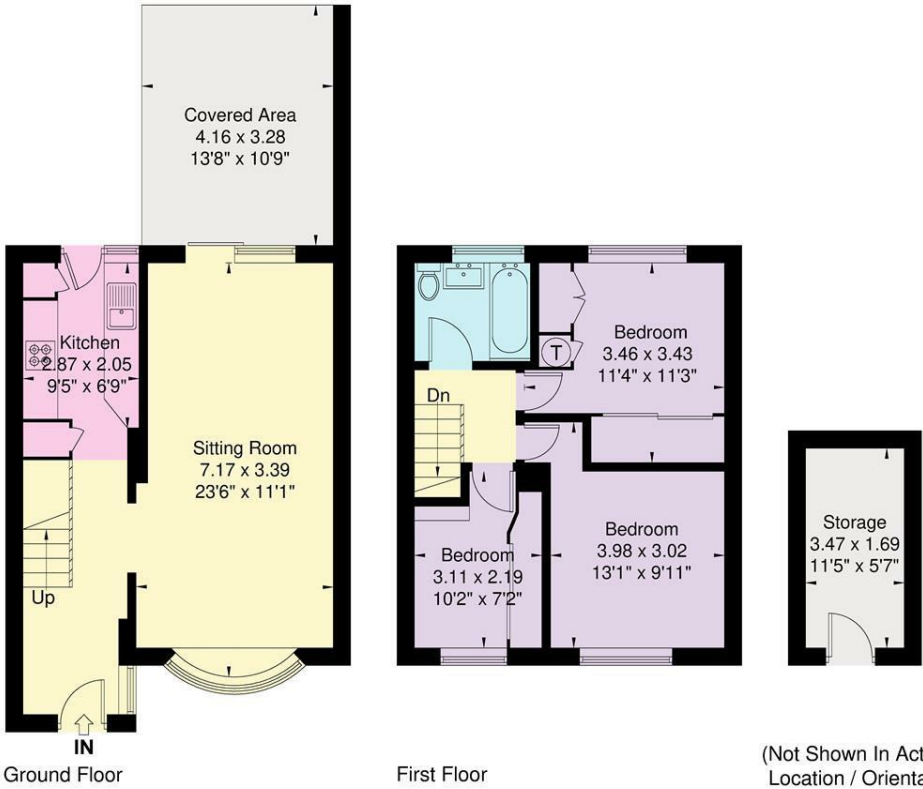
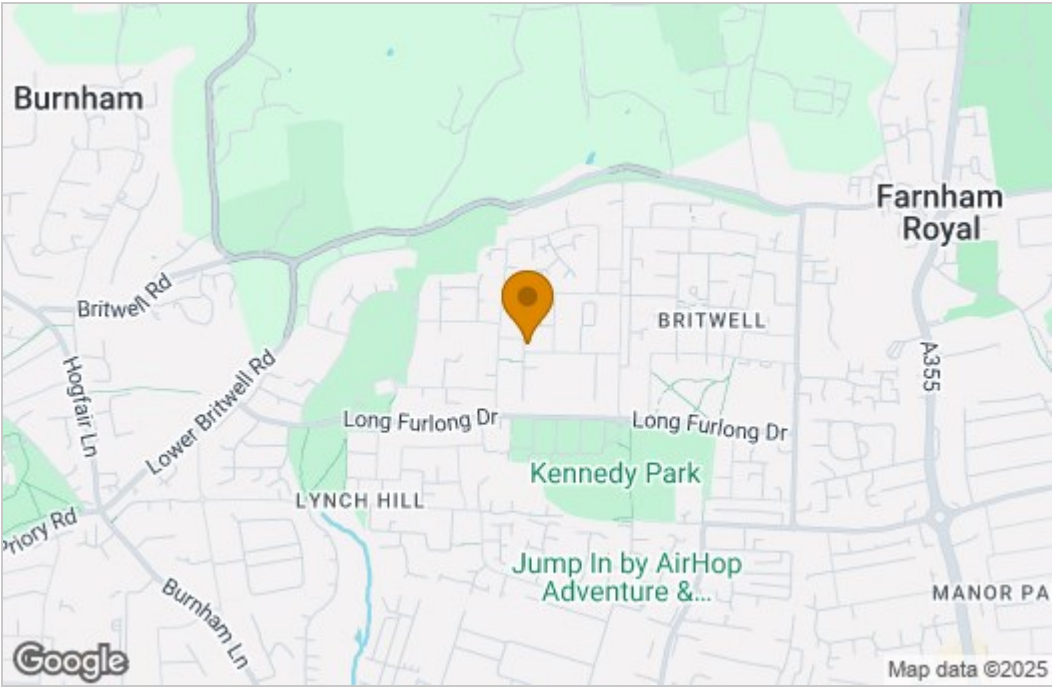
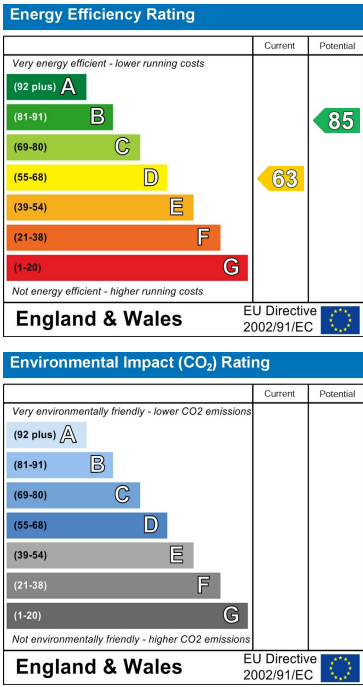


Illustration for identification purposes only,  
measurements are approximate, not to scale.

Area Map



Energy Efficiency Graph



These particulars, whilst believed to be accurate are set out as a general outline only for guidance and do not constitute any part of an offer or contract. Intending purchasers should not rely on them as statements of representation of fact, but must satisfy themselves by inspection or otherwise as to their accuracy. No person in this firm's employment has the authority to make or give any representation or warranty in respect of the property.